



## CARESTREAM DIRECTVIEW Max CR System



Boost CR productivity with a workflow leader. Maximize throughput, productivity, and patient satisfaction with the CARESTREAM DIRECTVIEW Max CR System. A next generation workflow leader, this system has been developed in direct response to customer feedback and evolving technology. The Max CR System provides “drop-and-go” cassette processing that reduces radiographer queuing and waiting at the reader. Processed images can be sent automatically to pre-selected destinations without manual intervention.

Drop-and-go cassette processing, remote operations panel – and more! Distributed workflow is achieved with a wall-mounted CARESTREAM DIRECTVIEW Remote Operations Panel, allowing study functions to be performed in the examination room. As a result, radiographers are free to spend more time with each patient, and more time performing examinations. Key improvements include faster throughput, easier cassette loading, expanded software capabilities, and reduced service-access requirements for greater placement flexibility. Part of Carestream Health's broad digital portfolio, the Max CR System offers the image quality, reliability, support, and service you expect from Carestream Health.



## Fast throughput

- Process up to 101 cassettes an hour.
- Handle 16 cassettes at one time: up to 8 queued for processing, and 8 erased and ready for new imaging studies.
- Cassette is ready to reuse in 40 seconds.\*
- Review an image in 34 seconds at a DIRECTVIEW Remote Operations Panel.\*
- “Drop-and-go” workflow virtually eliminates radiographer queuing at the reader and allows you to forward images directly to multiple network destinations (laser imager, diagnostic workstation, or archive) without radiographer intervention.
- Print the first image on film in 65 seconds using a DRYVIEW 6800 Laser Imager.

\* For 35 x 43 cm cassette. Times for other radiography cassette sizes are the same or less. Time for image at a network device is dependent on network performance.

## Enhance workflow and productivity

- Complete an exam in as few as four screens depending on system configuration.
- Save time and effort with a barcode reader for patient/cassette/exam ID.
- Perform virtually all study functions in the examination room with a wall-mounted Remote Operations Panel – reducing time away from the patient and improving patient satisfaction.
- Reprocess images if needed during image review – reducing the cost, time, dose, and inconvenience of repeat exposures.
- Integrate CR and DR floor model systems together with the optional DIRECTVIEW Capture Link System to streamline workflow when a study includes CR and DR images.

## Intuitive, powerful user interface

- Learn and use the system quickly with an intuitive interface designed for simple, consistent operation on DIRECTVIEW CR and DR Systems.
- Use the same interface at the unit's 17-inch flat-panel touch screen and at the remote operations panel.
- Pre-select up to 24 unique profiles of multiple destinations.
- Customize and preset image display parameters to suit department preferences.
- Choose the order in which patient records appear on the work list screen to suit user preference – alphabetical, oldest first, newest first.



## Maintain high diagnostic standards

- Process images with built-in state-of-the-art DIRECTVIEW Image Processing Software.
- Take image quality and diagnostic confidence to a new level with optional DIRECTVIEW EVP Plus Software that provides extended image latitude without loss of detail contrast.
- Optimize image viewing with optional black surround / masking software.
- Improve image quality through optional automatic detection and suppression of gridline artifacts.

## Image preparation and productivity features

- Improve image preparation with a configurable text box.
- Accept all study images without the need to access each individual image.

- Increase image quality and reduce retakes by magnifying an image area from one-quarter to full resolution to help identify patient position and movement.
- Reduce keystrokes by preloading procedure and exam information.
- Automatically remove patient records cancelled by the HIS/RIS from the CR database.
- Use an enhanced trauma button to quickly select a custom patient record when multiple trauma patients must be imaged.
- Promote productivity by identifying areas for improvement with an optional "reject image reason" data-entry tool.
- Optional DICOM work list management service class user software lets you obtain patient information directly from the HIS/RIS, eliminating the need for the radiographer to enter this information at the CR.
- Optional IHE scheduled workflow software automatically notifies the HIS/RIS of exam status to increase productivity with consistent patient and ordering information

## Simpler image management

- Store approximately 2,000 images online for rapid recall.
- Minimize errors with a system configuration that prohibits distribution without image approval.
- Route images automatically to multiple DICOM destinations.
- Users are alerted when patient data is incomplete or image delivery is pending.
- View the status of the last printer to which the system forwarded an image.
- Avoid image loss from power failure with standard on-board, uninterruptible power supply (UPS).

## Patient data protection

- Configure the system to require entry of user name and password.
- Guard against unauthorized viewing of an unattended system with an automatic security screensaver.
- Minimize threats from worms and other malware with a built-in firewall.
- Use optional security audit log software with system login to prevent unauthorized users from accessing data stored in the CR system and track access to specific images to support privacy regulation requirements.



“DIRECTVIEW EVP Image Processing Software provides optimal viewing of structures with vastly different densities, which is a tremendous advantage.”

## CARESTREAM RIS, PACS, Clinical Data Archiving

- Provide a totally integrated, enterprise-wide radiology suite that automates the various elements of the diagnostic exam process.
- Together, CARESTREAM RIS, PACS, and Clinical Data Archiving enable highly efficient diagnostic reporting and clinical review.
- Facilitate easy storage, retrieval, and distribution of a patient's entire radiology record – all through a synchronized desktop.
- Share and leverage images and information across multiple departments.
- Improve productivity, enhance patient services, and reduce network and storage infrastructure costs.

## Choice of printing options

- Print CR images on film with a choice of CARESTREAM'S DRYVIEW Laser Imagers. They can be configured to receive CR images automatically.
- Use a DRYVIEW 6800 Laser Imager and select from five film sizes including up to three online, all at 650 dpi resolution.
- Print true-size images using any DRYVIEW Laser Imager.
- Have flexibility to format with multiple images on a single sheet of film.

## Expert network service and support

- Maximize your network throughput, performance, and reliability with Carestream Health network services.
- Count on Carestream Health as your single point of contact for expert network consulting, assessment, design, implementation, support, and monitoring.
- Check with your local Carestream Health representative for network service availability.

## Remote management services

- Secure remote diagnostics and service can help resolve issues promptly and reduce service calls.
- Proactive notification to Carestream Health service centers helps optimize imager uptime.
- Remote assessment enables service personnel to arrive on-site with appropriate parts, expediting service.



## Accessories and Options

The following optional accessories and software expand the capabilities of your Max CR System. Each of these is offered individually so that you can choose and purchase the options that best meet your needs.



## Remote Operations Panel

Extend Max CR System reach and functionality with this wall-mounted touch-screen panel that allows radiographers to perform most system functions away from the main unit. Network up to 10 remote operations panels to a single DIRECTVIEW Max CR System. Or network one remote operations panel to as many as eight Max CR systems.

## Total Quality Tool

Perform your own objective image tests and QC measurements with the same interface used for examinations. Test at your convenience – without the cost, scheduling, or disruption of third-party testing.

## EVP Plus Software

Take image quality and diagnostic confidence to a new level with this technological breakthrough that extends image latitude without loss of detail contrast. All raw image data are used and retained during image processing and enhancement.

## Capture Link System

Link up to five DIRECTVIEW CR and/or DR floor model Systems to improve workflow and productivity in high-volume areas. Share cassette identification, scanning, and image review functions on linked CR systems. Enable CR cassette identification and image review at the DR console.

## CR Long-Length Imaging System

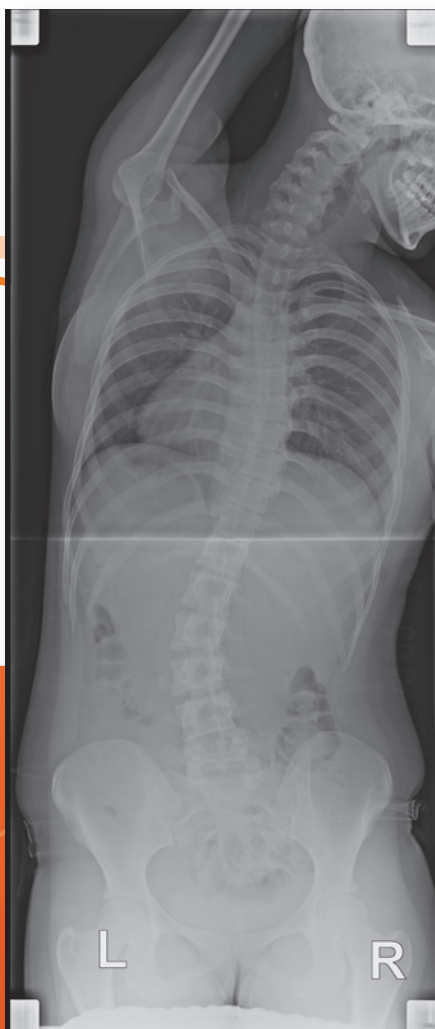
Capture long-bone computed radiography images – full leg and full spine – with this easy-to-use accessory. Fully automatic and highly reliable stitching software delivers images up to 17 inches wide by 51 inches long (43 x 129 cm), with few, if any, visible seams. A portable cassette system for supine and upright procedures produces up to 14 x 33 inches (35 x 84 cm).

## Remote Patient Data Entry Software

Increase productivity, improve workflow, and enhance patient satisfaction with remote entry of patient data. Enter demographic data for exams with a PC at the radiology reception desk or other preferred location. Enable your radiographer to spend more time performing examinations.

## Mammography Feature for CR

Bring the convenience and image quality of the Max CR System to digital mammography. This feature, coupled with DIRECTVIEW CR Mammography Cassettes and EHR Screens, delivers mammography quality images while retaining all CR system features and capabilities for general radiography examinations.



## DIRECTVIEW Max CR System Specifications

### Dimensions

- Height: 52 in. (132.1 cm)  
(41 in. [104.1 cm] at cassette station)
- Width: 41 in. (104.1 cm)
- Depth: 30 in. (76.2 cm)
- Weight: 956 lb (433.6 kg)
- Monitor: 17.0 in. flat-panel touch screen,  
full color, 1280 x 1024 matrix

### Throughput

- Capable of handling up to 8 exposed cassettes and 8 erased cassettes at a time
- Throughput: up to 101 cassettes/hour
- Time from cassette insertion to image at network: 34 seconds or less\*

\* For 35 x 43 cm cassette. Times for other radiography cassette sizes are the same or less. Time for image at a network device is dependent on network performance.

Cassette Size	Cassettes per Hour
15 x 30 cm**/PQ	121
18 x 24 cm/PQ	100
24 x 30 cm/PQ	91
35 x 35 cm/PQ	101
35 x 43 cm	91
35 x 43 cm/PQ long-length imaging	84
35 x 84 cm/PQ long-length imaging	84
18 x 24 cm***/EHR	62
24 x 30 cm***/EHR	44

\*\* For dental applications

\*\*\* For mammography imaging

### Grayscale Resolution

- 4096 (12-bit grayscale)

### Power

Includes an on-board, uninterruptible power supply (UPS)  
100–120 VAC 10 Amps 50/60 Hz  
200–240 VAC 5 Amps 50/60 Hz.

### Heat Dissipation

1400 BTU/HR Max

### Network

10 BASE-T, 100 BASE-T Network Adapter

### Regulatory

- FDA, UL, cUL, CE Mark
- System is certified as a casual patient contact medical device

[www.carestream.com](http://www.carestream.com)

# Carestream

Carestream Health  
150 Verona Street  
Rochester, NY 14608  
U.S.A.