

**IMAGE PERFORMANCE**

LCD Panel	Active Matrix With In Plane Switching (IPS)
Picture Size (H x W)	36.6 x 20.6 inches (930 x 523 mm)
Viewing Area (Diagonal)	42 inches (1067 mm)
Pixel Pitch	0.485 mm
Resolution (H x W)	1920 x 1080 (Full HD)
Luminance	500 cd/m <sup>2</sup>
Contrast Ratio	1300:1
Aspect Ratio	16:9
Number of Colors	16.8 Million
Color Gamut	100% (SMPTE 296M, HD Standard)
Viewing Angle	178°
Response	5-8 ms
Gamma	1.8, 2.0, 2.2, 2.4, 2.6, Color Corrected Video Gamma, PACS (DICOM)

**GENERAL**

Power Requirements	100 to 240 VAC ± 10%, 50/60 Hz
Power Consumption	240W (typical)
Dimensions (W x H x D)	40.5 x 24.9 x 4.7 inches (1030 x 633 x 119 mm)
Weight	66 lbs (30 Kg)
Temperature	Operating: 0 to +40°C (+32 to +104°F) Storage: -20 to +60°C (-4 to +140°F)
Humidity	Operating: 20 – 85% RH Storage: 5 – 85% RH
Mounting	300 x 100 (mm) VESA

**SUPPLIED ACCESSORIES**

Video Cables - S-Video, BNC (2), VGA, DVI (2), AC Cord,  
Product Documentation CD, Printed User Manual

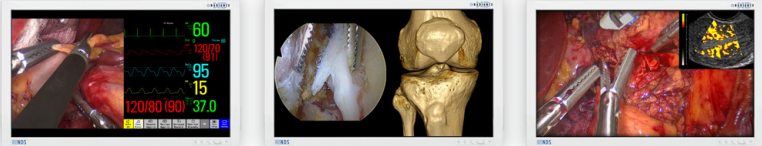
**USER CONTROLS - ON-SCREEN MENU**

Primary / Secondary Input Selection, MMI Window Size / Swap, Brightness, Contrast, Hue, Saturation, Gamma, Sharpness, RGB Gain, Backlight Level, Horizontal & Vertical Position, Phase, Frequency, DPMS, Auto-Source Select, Scaling, Overscan (Up to 25% Overscan), Five Programmable User / Modality Settings Profiles

**VIDEO INPUT FORMATS**

Format	Input (Digital)	Input (Analog)	Horizontal Frequency (kHz)
576/50i (PAL)	SDI, DVI / Fiber	Comp, S-Video, RGBS, YP <sub>b</sub> P <sub>r</sub>	15.625
480/60i (NTSC)	SDI, DVI / Fiber	Comp, S-Video, RGBS, YP <sub>b</sub> P <sub>r</sub>	15.734
576/50p	DVI / Fiber	SOG, RGBS, YP <sub>b</sub> P <sub>r</sub>	31.250
480/60p	DVI / Fiber	SOG, RGBS, YP <sub>b</sub> P <sub>r</sub>	31.469
720/50p	HD-SDI, DVI / Fiber	HD-RGBS, HD-YP <sub>b</sub> P <sub>r</sub>	37.500
720/60p	HD-SDI, DVI / Fiber	HD-RGBS, HD-YP <sub>b</sub> P <sub>r</sub>	45.000
1080/50i	HD-SDI, DVI / Fiber	HD-RGBS, HD-YP <sub>b</sub> P <sub>r</sub>	28.125
1080/60i	HD-SDI, DVI / Fiber	HD-RGBS, HD-YP <sub>b</sub> P <sub>r</sub>	33.750
1080/50p	DVI / Fiber	--	56.2
1080/60p	DVI / Fiber	--	67.3

**FULL HIGH DEFINITION MULTI-MODALITY IMAGING**



**INPUTS**

DVI (1) / Fiber	DVI-D / LC x 4
DVI (2)	DVI-I
HD-SDI (1)	BNC, 75 Ω
HD-SDI (2)	BNC, 75 Ω
HD-RGBS, RGBS	BNC x 5, or DVI-I (2), 0.7 Vp-p ± 6db, 75 Ω
HD-YP <sub>b</sub> P <sub>r</sub> / YP <sub>b</sub> P <sub>r</sub>	BNC x 5, or DVI-I (2), 0.7 Vp-p ± 6db, 75 Ω
VGA	HD-15, or BNC x 5, or DVI-I (2), 0.7 Vp-p ± 6db, 75 Ω
Sync-On-Green (SOG)	BNC, 75 Ω
S-Video	DIN-4, or BNC x 2, 0.7 Vp-p +6/-3db, 75 Ω
Composite	BNC, 0.7 Vp-p +6/-3db, 75 Ω

**CONNECTIVITY**

**OUTPUTS**

DVI (1)	DVI-D
HD-SDI (1)	BNC
HD-RGBS, RGBS	BNC x 5, or DVI-I (2)
HD-YP <sub>b</sub> P <sub>r</sub> / YP <sub>b</sub> P <sub>r</sub>	BNC x 5, or DVI-I (2)
S-Video	DIN-4

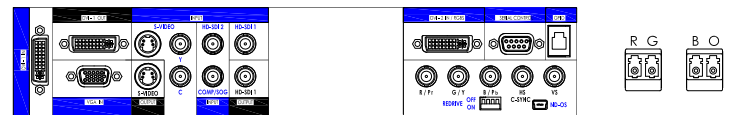
**CONTROL INPUTS**

Serial Remote	D-sub 9pin, RS-232C
GPIO	RJH-4, TTL
ND-OS	Mini-USB

**COMPLIANCE & CERTIFICATIONS**

UL 60601-1, EN 60601-1, EN 60601-1-2, MDD 93/42/EEC, CE,  
CAN/CSA C22.2 NO. 601.1, Class 1 Medical Device, RoHS, FCC Part 15

**INPUT / OUTPUT CONNECTOR PANEL**



**MULTI-MODALITY INPUT COMBINATIONS (FULL MMI)**

PRIMARY INPUT	SECONDARY INPUT									
	DVI(1)	HD-SDI (1)	DVI(2)	HD-SDI (2)	HD-YP <sub>b</sub> P <sub>r</sub>	HD-RGBS	Y/C	Comp.	SOG	VGA
DVI (1)	•	•	•	•	•	•	•	•	•	•
HD-SDI (1)	•	•	•	•	•	•	•	•	•	•
DVI (2)	•	•	•	•	N/A	N/A	•	•	•	•
HD-SDI (2)	•	•	•	•	•	•	•	•	•	•
HD-RGBS	•	•	N/A	•	•	•	•	•	•	•
HD-YP <sub>b</sub> P <sub>r</sub>	•	•	N/A	•	•	•	•	•	•	•
Y/C	•	•	•	•	•	•	•	N/A	•	•
Comp.	•	•	•	•	•	•	N/A	•	•	•
SOG	•	•	•	•	•	•	•	•	•	N/A
VGA	•	•	•	•	•	•	•	•	N/A	•