

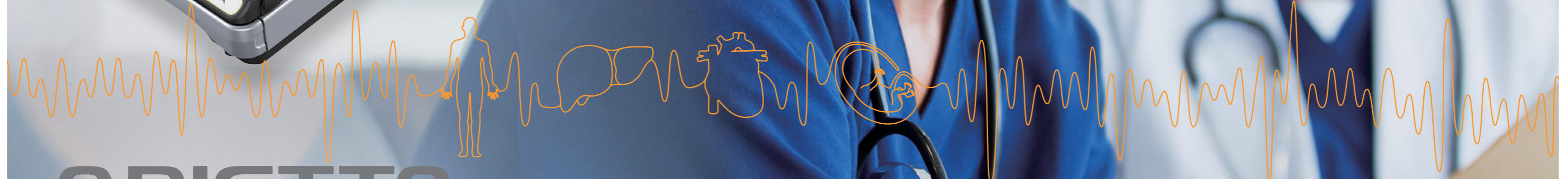
HITACHI
Inspire the Next

ARIETTA Prologue



Mobility at your Fingertips

Performance | Operability | Compact Design



ARIETTA Prologue

The ARIETTA Prologue provides fast access to diagnostic quality imaging for a broad range of applications. Thanks to its intuitive and simple operation, the ARIETTA Prologue fulfills the fundamental role of a portable ultrasound system, bringing the clinical benefits of diagnostic ultrasound into new areas of healthcare. The design and usability of the ARIETTA Prologue has been comprehensively evaluated to deliver the right performance as a cutting-edge ultrasound system fitting to the user's requirements and operating environment.

Compact Design & High Mobility

ARIETTA Prologue is designed to be hand-carried. Its use can be extended by combining it with the cart or the probe tray.



A style that fits

The ARIETTA Prologue is suited for use in a variety of different settings:

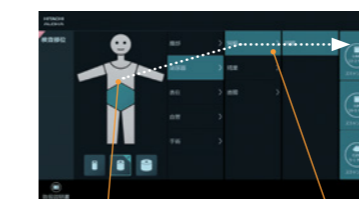
- Examination room – Orthopaedics
- Treatment room – Anaesthesiology
- Emergency room
- Consultation room
- Ward
- Home visits
- Portable examinations

Full Smart Operation

With full control from the touch panel, the ARIETTA Prologue is an examination tool available when and where you need it. Complicated setting up is not necessary.

Quick and accurate diagnosis by intuitive operation. Examination efficiency is improved.

SMART SET-UP



Choose the appropriate body part and the patient body size.

Select the region and organ for study.

Perform your examination using an optimum preset.

Region for examination, body size of the patient: ideal settings are automatically selected using this simple sequence of touch controls and gestures.

TRANSFER OF PREVIOUS SET-UP

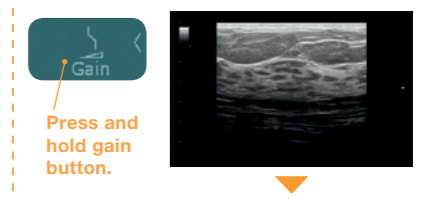


Select a past image.

Start scanning using parameters from the selected image.

Select a previously acquired image and the system will adjust to the same exam settings, invaluable for follow-up studies.

IMAGE OPTIMIZER



Press and hold gain button.

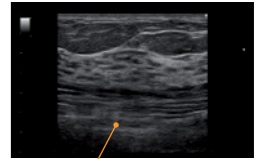
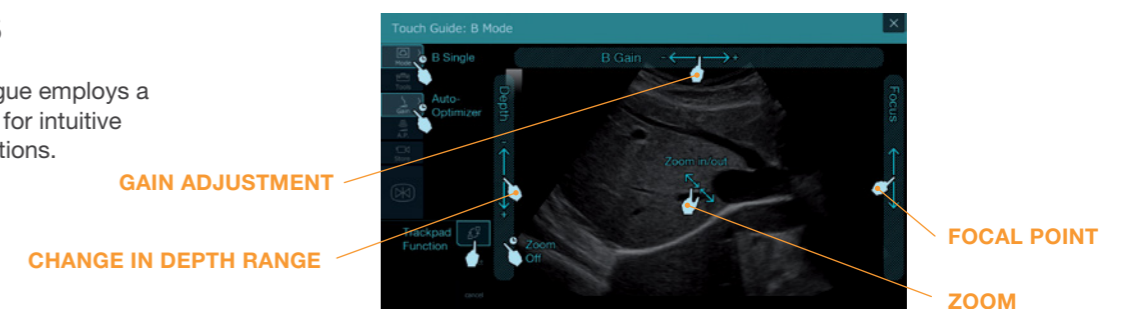


Image gain optimized.

Image can be enhanced by a single button press. B-mode gain, baseline position and velocity range in PW-mode are all optimized.

Tablet-US

ARIETTA Prologue employs a full touch panel for intuitive and easy operations.



Full Screen Mode

The image is enlarged, enabling detailed observation.

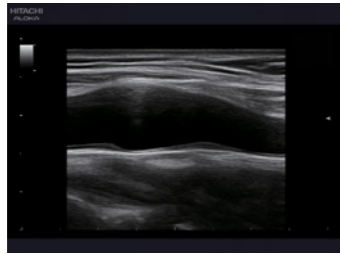


High Quality Imaging

Even with its compact housing, ARIETTA Prologue uses the same image processing technologies normally reserved for high-end systems.

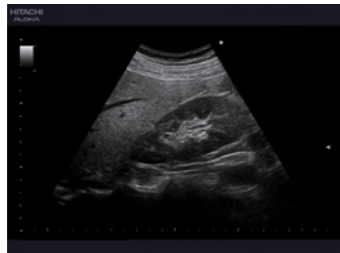
The superior image quality enables a thorough diagnostic examination.

SPATIAL COMPOUND IMAGING (SCI)



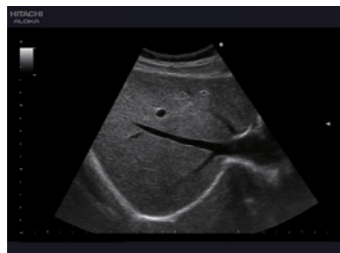
Transmission of beams in multiple directions to reduce artefacts. Tissue boundaries can be visualized clearly.

ADAPTIVE IMAGE PROCESSING (AIP)



Reduces speckle noise and emphasizes borders. The tissue structure is imaged with clarity, making images easier to interpret.

SILKY IMAGE PROCESSING (SIP)

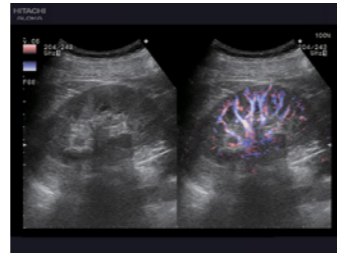


An adaptive image filter that boosts edge enhancement and contrast resolution providing clean tissue borders and detailed parenchyma.

Advanced Features

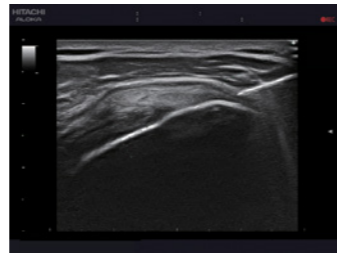
The ARIETTA Prologue is equipped with functions that improve efficiency and support rapid, accurate diagnosis.

eFLOW



Provides clearer delineation between tissue and blood flow compared to conventional colour Doppler. Even low velocity flow can be imaged with high sensitivity.

NEEDLE EMPHASIS



Technology to enhance the visualization of the needle, increasing safety and accuracy for biopsy and other interventional procedures.

AUTO IMT MEASUREMENT*



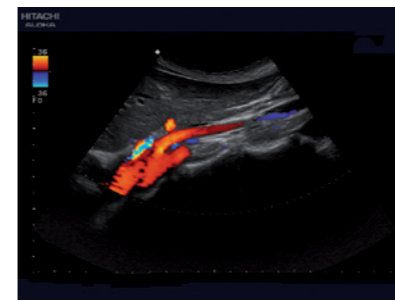
Automatic trace of the vessel intima with a display of its mean thickness. It provides an assessment of the patient's cardiovascular disease risk.

* optional

Broad Range of Applications

ARIETTA Prologue is compact and portable, designed for a broad range of point-of-care applications.

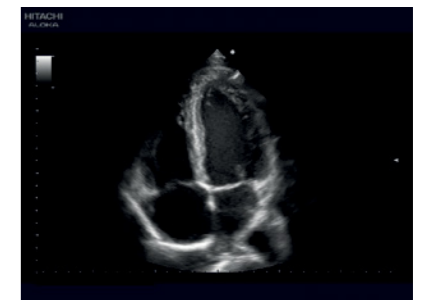
Image Gallery



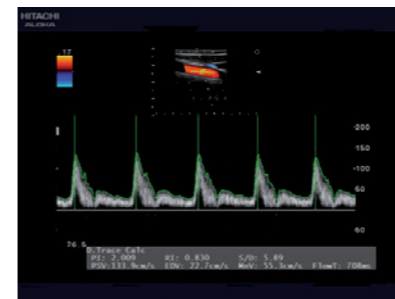
Abdominal aorta with branches



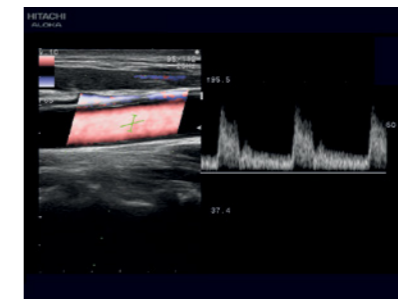
Gallbladder



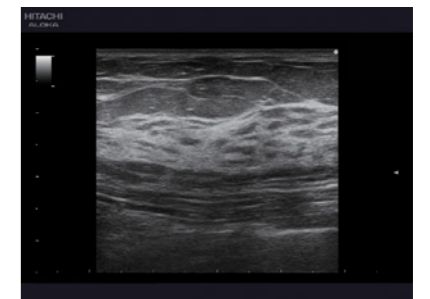
Cardiac 4-chamber view



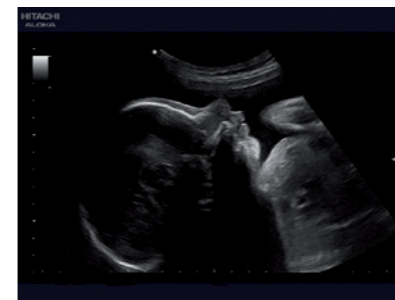
Doppler Auto Trace



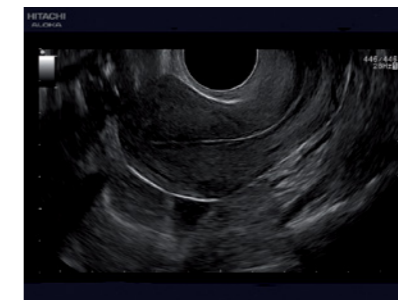
Common carotid artery



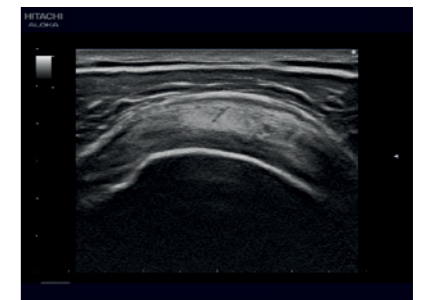
Mammary gland



Fetal profile



Sagittal view of uterus



Rotator cuff

ARIETTA Prologue



- ARIETTA is a registered trademark or trademark of Hitachi, Ltd.
- Hitachi Ltd. reserves the right to make changes in specifications and features shown herein, or discontinue the product described at any time without notice.
- The standard components and optional items vary depending on the country.

Manufactured and distributed by

 **Hitachi, Ltd.**

2-16-1, Higashi-Ueno, Taito-ku, Tokyo, 110-0015, Japan

Distributor for Europe

 **Hitachi Medical Systems Europe Holding AG**

Sumpfstrasse 13, 6300 Zug, Switzerland
www.hitachi-medical-systems.com