

Dissolvable gel helps protect tissues  
following sinus surgery

 **smith&nephew**  
**RAPID RHINO<sup>◇</sup>**  
**STAMMBERGER**  
**SINU-FOAM<sup>◇</sup>**  
Dissolvable Post-op Dressing



# What is STAMMBERGER SINU-FOAM<sup>◊</sup>?

Dissolvable dressing that allows for easy placement throughout the nasal and sinus cavities

STAMMBERGER SINU-FOAM is a CMC-based dressing intended to minimize bleeding and edema and to prevent adhesions between the septum and the nasal cavity. STAMMBERGER SINU-FOAM starts as a dry carboxymethylcellulose (CMC) fiber within a syringe. When properly mixed with sterile water, the CMC gels to form a viscous dissolvable foam that conforms to the nasal cavities while providing a moist, hydrocolloid physical barrier.

STAMMBERGER SINU-FOAM is designed to:

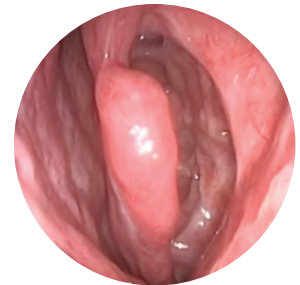
- Eliminate the need for painful post-op removal of packing
- Remain where placed and dissolve gradually through normal outflow in 7-10 days
- Be easily debrided using gentle suction if any foam remains in situ post-op
- Provide a moist environment



SINU-FOAM kit components



Intra-op view of  
STAMMBERGER SINU-FOAM



2 weeks post-op

## Why CMC material?

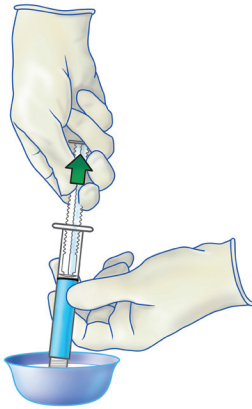
CMC is commonly used in pharmaceuticals and medical devices. Medical devices containing CMC, such as the RAPID RHINO<sup>◊</sup> epistaxis dressings, STAMMBERGER SINU-FOAM dressing, and SEPRAFILM<sup>◊</sup> bioresorbable membrane have been in clinical use over the last two decades.

# STAMMBERGER SINU-FOAM<sup>®</sup>

## Mixing Instructions

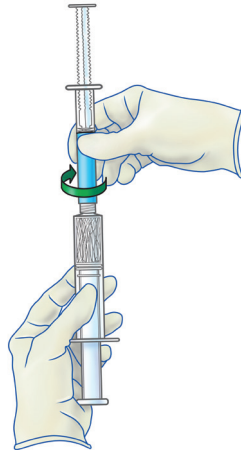
### Step 1

Draw sterile water or Lactated Ringers solution up to the black line (~8ml) of the small syringe.



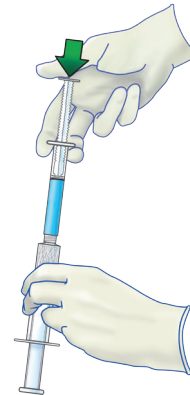
### Step 2

Screw and connect the two syringes together.



### Step 3

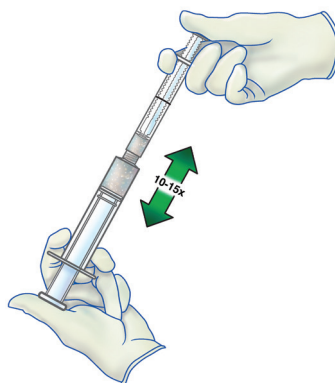
With the solution vertically on top, press the small syringe plunger so that all the solution wets the fiber in the large syringe.



### Step 4

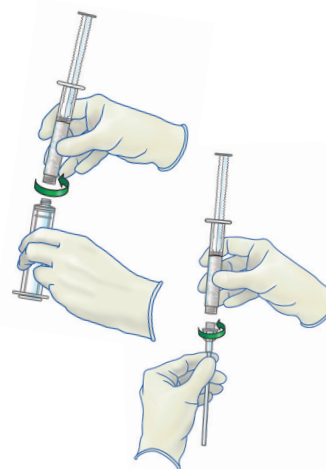
Mix the foam between the two syringes (10-15 times).

**CRITICAL:** During each pass, all the foam should move from one syringe to the other. Finish mixing the foam in the smaller syringe.



### Step 5

Disconnect the two syringes and attach the cannula to the small syringe in preparation for deployment into the sinuses.





## Ordering information

### STAMMBERGER SINU-FOAM® dissolvable post-op dressing

Reference #	Description
RR650	STAMMBERGER SINU-FOAM

**ArthroCare Corporation**  
7000 West William Cannon Drive  
Austin, TX 78735  
USA

[www.smith-nephew.com](http://www.smith-nephew.com)

Information: 1-800-343-5717  
Orders/Inquiries: 1-888-994-2782