



Products for ureterorenoscopy



 **Coloplast**



ReTrace

Ureteral access sheaths

Innovation: when the working guidewire becomes the safety guidewire

Designed

To establish a **continuous access** to the ureter and the kidney.

To **protect the ureter** during repeated instrument exchanges during ureteroscopy.

To reduce **intrarenal pressure**.

Benefits

Minimized time to perform the procedure: in one step the working guidewire becomes a safety guidewire.

Reduced number of devices: save one guidewire and one dual lumen catheter.

Possibility to **inject contrast medium** during the access sheath insertion.

Features

Hydrophilic coating to facilitate the introduction.

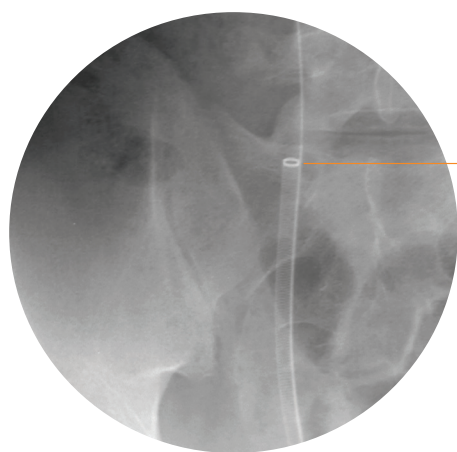
Radiopaque ring at the distal part to enhance visibility under fluoroscopy and allow precise positioning.

Kink resistant sheath to facilitate advancement and placement.

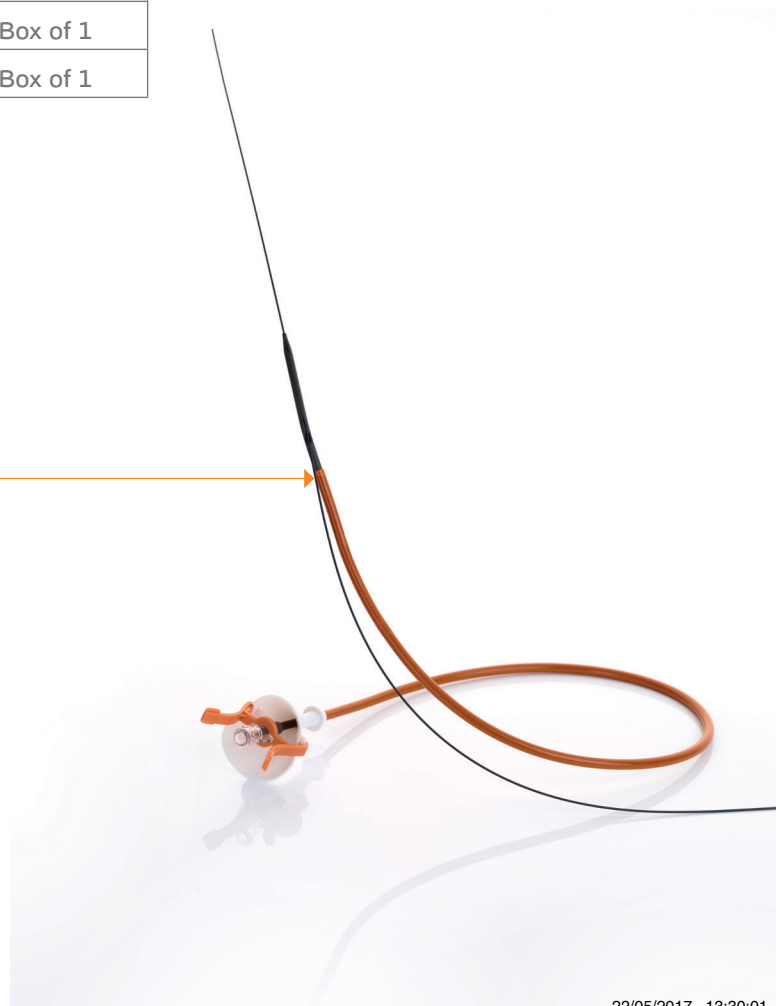
Ergonomic shape for one hand operation.

Ordering information

REF.	Sheath (internal/external diameter)	Length	Quantity
ACXL10	10/12 Ch/Fr	35cm	Box of 1
AXXL10	10/12 Ch/Fr	45cm	Box of 1
ACXL12	12/14 Ch/Fr	35cm	Box of 1
AXXL12	12/14 Ch/Fr	45cm	Box of 1



Radiopaque ring





Dormia No-Tip

Stone retrieval baskets



Designed

For **stone extraction** during ureteroscopy.

Benefits

Tipless basket designed for direct contact with tissue while providing minimal trauma and reducing bleeding.

Features

4 wire basket designed for effective capture and repositioning stones in the kidney.

Nitinol basket for maximum shape retention.

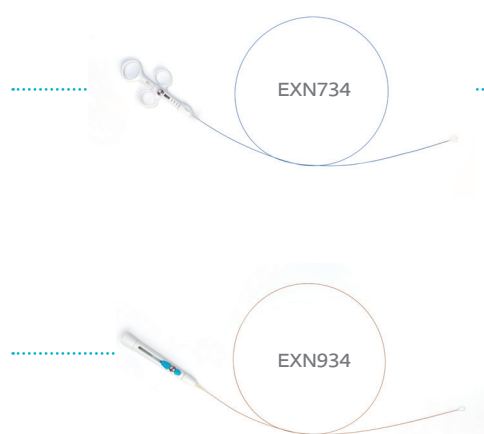
Teflon coated sheath for perfect glide and smooth movements.

1.5 Ch/Fr sheath size for enhanced irrigation flow, visibility and scope deflection.

Ordering information

REF.	Diameter	Length	Basket size	Quantity
EXN734	2.2 Ch/Fr	120cm	11mm	Box of 1
EXN934	1.5 Ch/Fr	120cm	9mm	Box of 1

Supplied with a waterproof connector (Tuohy-Borst).



Double loop ureteral stents

Imajin, Biosoft duo, Vortek

Designed

To restore and maintain ureteral drainage from the kidney to the bladder.

Benefits

A wide range of materials to answer the urologist needs.

Features

- **Vortek and Biosoft duo materials**

Dual durometer designed for easy insertion and placement while retaining great flexibility for patient comfort.

Biocompatible material designed for **12-month indwelling time**.

Available with **hydrophilic coating** to facilitate stent advancement.

Thermosensitive material is firm for advancement but softens at body temperature for increased patient comfort.

- **Imajin (Silicone)**

Gold standard material for **12-month indwelling time**.

The best compromise for patient comfort and tolerance.

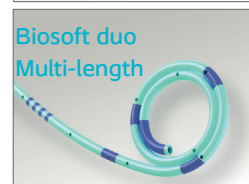
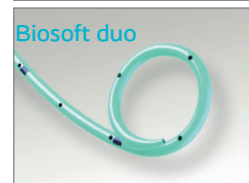
Less incrustation material.

Available with **hydrophilic coating** to facilitate stent advancement.

Placement

Graduation markings to confirm placement.

Shape memory loop to reduce the risk of migration.



Ordering information

Material	Extremities	Diameter (Ch/Fr)	Length (cm)
Imajin	Open/Open	6 - 7 - 8	16 - 20 - 24 - 26 - 28 - 30
	Open/Closed	6 - 7 - 8	16 - 24 - 26 - 28 - 30
	Closed/Closed	6 - 7	16 - 24 - 26 - 28 - 30
Imajin Hydro-coated	Open/Open	6 - 7 - 8	16 - 20 - 22 - 24 - 26 - 28 - 30
Vortek	Open/Open	4.8 - 6 - 7 - 8	12 - 16 - 20 - 22 - 24 - 26 - 28 - 30
	Open/Closed	4.8 - 6 - 7 - 8	12 - 16 - 20 - 22 - 24 - 26 - 28 - 30
Vortek Hydro-coated	Open/Open	4.8 - 6 - 7	22 - 24 - 26 - 28 - 30
Biosoft duo	Open/Open	6 - 7 - 8 - 9	20 - 22 - 24 - 26 - 28 - 30
	Open/Closed	6 - 7 - 8 - 9	20 - 22 - 24 - 26 - 28 - 30
Biosoft duo Hydro-coated	Open/Open	4.8 - 6 - 7	Multi-length (22 to 28cm)

Depending on the set, the ureteral stents are supplied with a guidewire (Hydrophilic Nitinol or PTFE coated core), a pusher (simple or steerable) and an ureteral catheter.

Guidewires

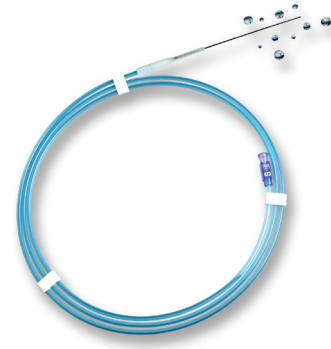
Designed

For **access** and **insertion of devices** during urologic procedures.

Benefits

A **wide range** of guidewires for access requirements.

Available in a large **choice of configurations** for multiple clinical scenarios.



Features

• Terumo guidewires and Orchestra guidewires

Combine **Nitinol** core and **hydrophilic coating** for:

- Greater flexibility, smooth navigation and increased control in difficult cases.
- Soft and atraumatic advancement through the urinary tract.

The **stiff shaft version** is designed to offer high torque control and to ease catheter advancement.

• Seldinger guidewires

PTFE-coated core for precise control and positioning.

Ordering information

Terumo guidewires			For specific countries only		
Order ref.	Diameter	Length	Rigidity	Tip	Quantity
AE0N35	0.035"	150cm	Standard	Straight	Box of 5
AE0P35			Stiff	Straight	
AE0T35			Standard	Angled	
AE0X35			Stiff	Angled	

Orchestra guidewires*			For specific countries only		
REF.	Diameter	Length	Rigidity	Tip	Quantity
AEAD35	0.035"	150cm	Standard	Straight	Box of 5
AECD35			Stiff	Straight	
AEAE35			Standard	Angled	
AECE35			Stiff	Angled	

Seldinger guidewires with fixed core					
REF.	Diameter	Length	Rigidity	Tip	Quantity
AE0032	0.032"	150cm	Standard	Straight	Box of 5
AE0035	0.035"	150cm	Standard		
AE0C35		150cm	Stiff		
AE0038	0.038"	150cm	Standard		

Seldinger guidewires with movable core					
REF.	Diameter	Length	Rigidity	Tip	Quantity
AE0A32	0.032"	150cm	Standard	Straight	Box of 5
AE0A35	0.035"				
AE0A38	0.038"				
AE0D35	0.035"	150cm	Stiff		



Ureteral dilators

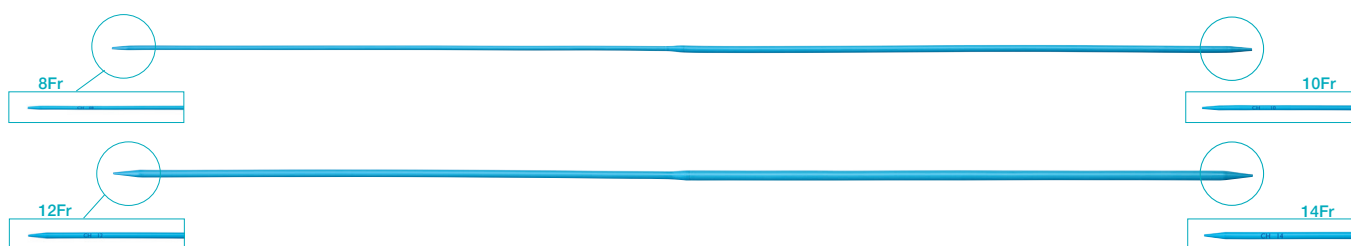
Designed

For dilatation of the ureter.

Features

Compatible with a 0.038" guidewire.

Diameters (Ch/Fr) are indicated at the tips of the dilators.



Ordering information

REF.	Diameter	Length	Quantity
RBD010	8 and 10 Ch/Fr	48cm	Box of 10
RBD014	12 and 14 Ch/Fr	48cm	Box of 10

HiLine

Irrigation line

Designed

For irrigation and visibility during ureteroscopy.

Benefits

Manual irrigation system.

Features

Anti-reflux valve to prevent backflow of fluid into the irrigation system.

Removable extension tubing to allow pump manipulation by surgeons or assistants.

Luer-Lock connection suitable for use with all brands of endoscopes.

Ordering information

REF.	Quantity
AK7000	Box of 10



Ostomy Care / Continence Care / Wound & Skin Care / Urology Care



The Coloplast logo, HiLine, ReTrace, ImaJin, Orchestra, Dormia, Vortek and Biosoft are registered trademarks of Coloplast A/S. © [2017-05]
All rights reserved. Coloplast A/S, 3050 Humlebaek, Denmark.

Global marketing: DOC00073EN