



A WORLD OF  
**OPPORTUNITIES**

YOUR ULTRASOUND EXAMINATIONS WILL CHANGE

**ARIETTA™  
650**  
**DeepInsight™  
ULTRASOUND  
SYSTEM**

- AI empowers deep learning know-how
- New levels of visualization with outstanding image accuracy
- Reproducibility and efficiency for stress free examinations



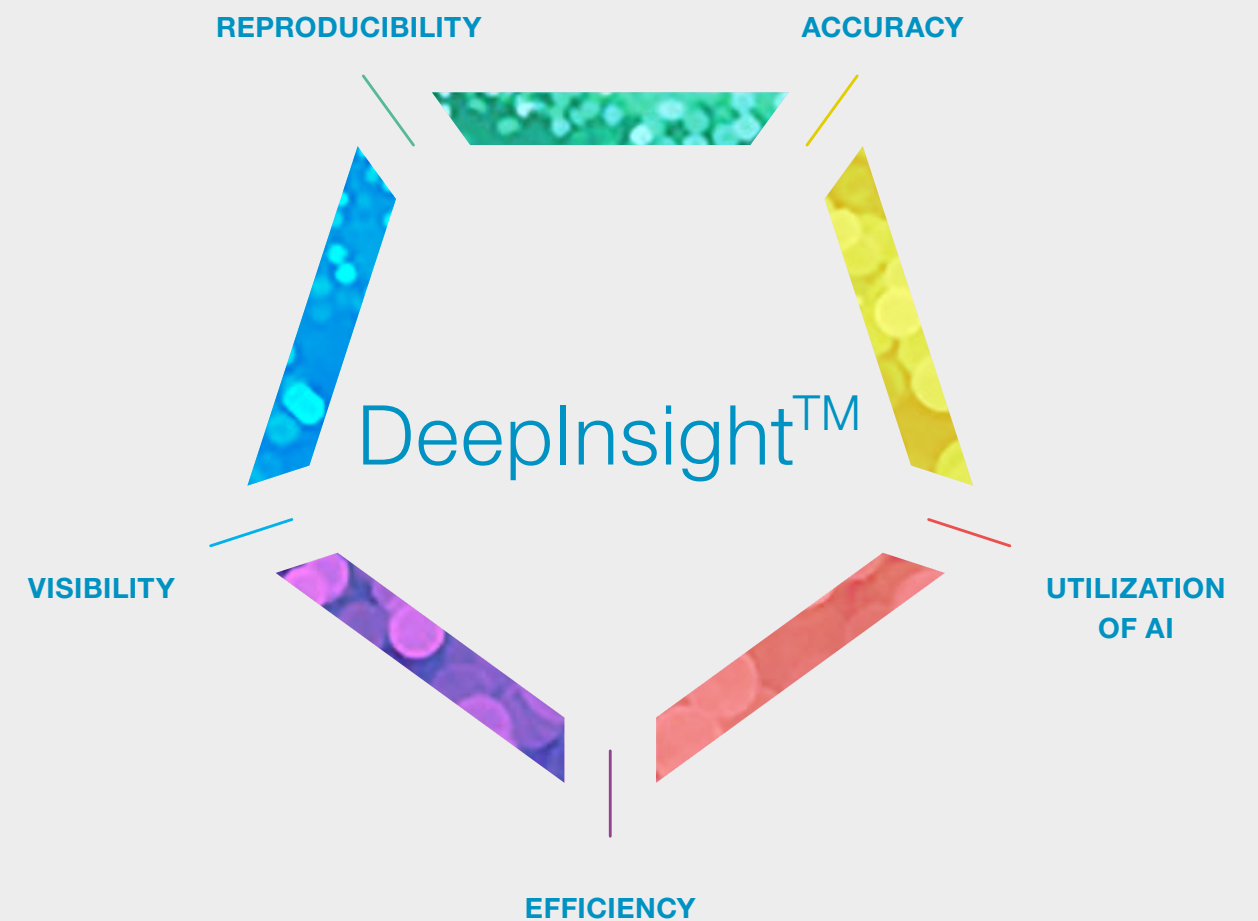
**FUJIFILM**  
Value from Innovation



EXCEPTIONAL  
IMAGE QUALITY  
AND OPERABILITY

## REDEFINING THE WAY YOU SEE **DeepInsight™ Technology**

Fujifilm Healthcare has been at the forefront of technology and product developments throughout their history and since the birth of diagnostic ultrasound imaging. Fujifilm Healthcare's vision for the future of ultrasound is the DeepInsight™ Technology. It represents our confidence in delivering outstanding image quality and the commitment to continue to innovate in order to reach the highest imaging standards. Fujifilm Healthcare also believes that innovative concepts are required to foster premium ultrasound imaging.





# ARIETTA™ 650 DEEPINSIGHT™ ULTRASOUND SYSTEM REDEFINING THE WAY YOU SEE

## SENSE AND VISUALIZE ULTRASOUND

The new reality of ultrasound imaging  
deepening diagnosis



DEEPINSIGHT™ TECHNOLOGY Powered by REiLI

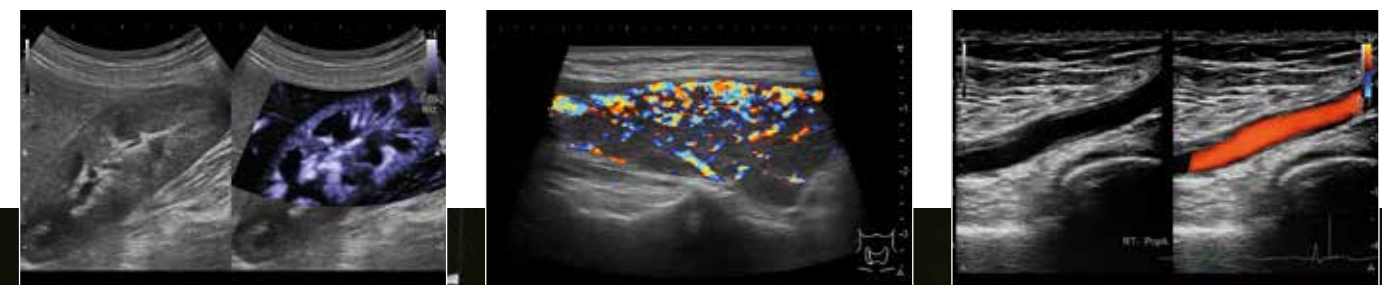
**DeepInsight™** technology utilizes an Artificial Intelligence (AI) technology which only extracts the necessary information to provide an unprecedented, highly accurate image quality.

### eFOCUSING LITE

Combined with the new **eFocusing LITE** technology, the **ARIETTA™ 650 DeepInsight™ ultrasound system** achieves new levels of sensitivity, penetration, contrast and spatial resolution.

### CARVING IMAGING

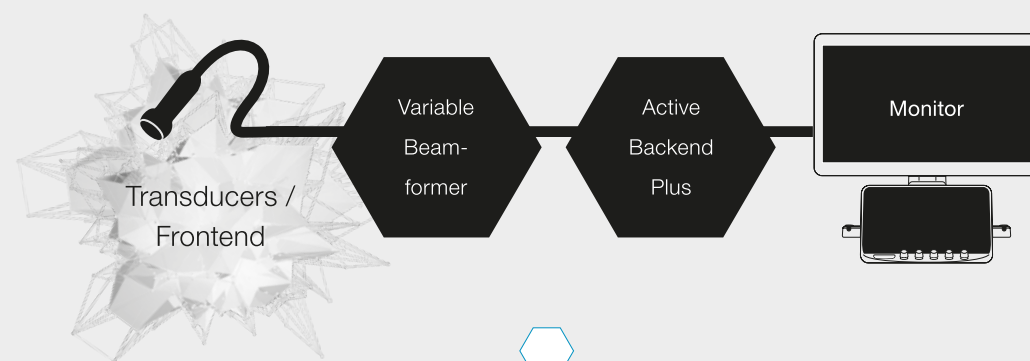
Additionally, the advanced image processing technology **Carving Imaging** delivers imaging results with less patient dependency.



### PURE IMAGE

Further refinement of technologies harnessing high quality “sound” improving image clarity on a compact system.

### PURE SYMPHONIC ARCHITECTURE



### SEAMLESS WORKFLOW

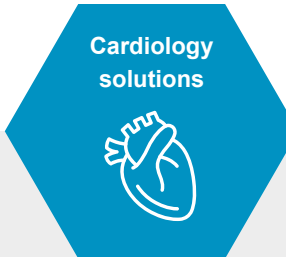
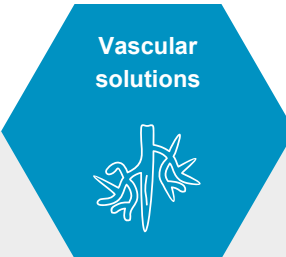
Designed with sophisticated ergonomics and multiple new tools that streamline your workflow.

### YOUR APPLICATION

An extensive variety of unique applications that deliver new clinical value are accessible across all specialties.

# YOUR ULTRASOUND SUPERIOR SYSTEM

The ARIETTA™ 650 DeepInsight™ Ultrasound System has unique and advanced applications that quickly provide diagnostic information keeping it one step ahead of the market



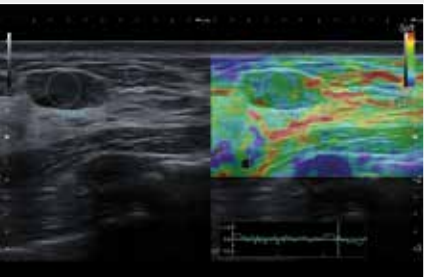
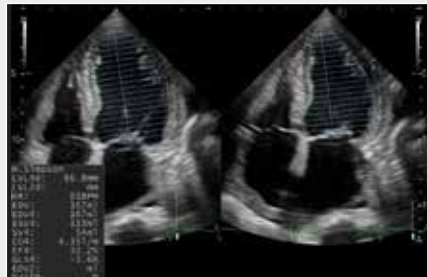
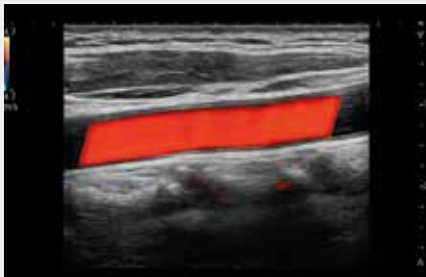
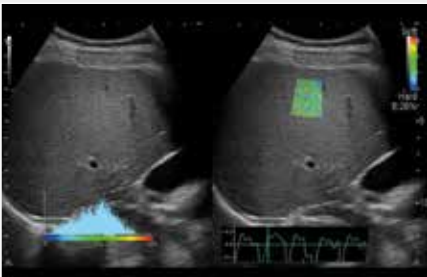
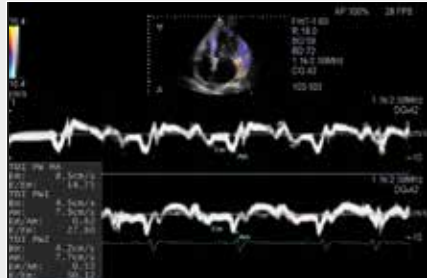
Powerful technologies for confident evaluation of diffuse liver diseases such as steatosis and fibrosis.

Early detection of lesions by detection of tumor vascularity.

Automatic cardiac measurement package for effective cardiovascular examinations.

Advanced technologies from early diagnosis, to follow-up and detection of fetal and women's health.

Spotting and characterising tissue abnormalities at an early stage for confident diagnosis and guidance during breast biopsy.

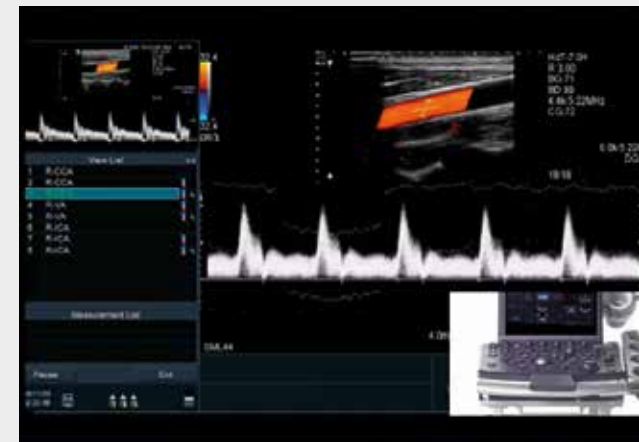






## SEAMLESS WORKFLOW EFFICIENT EXAMINATION

Pre-existing examination protocols and imaging conditions can be programmed. Button operations can be reduced significantly to support efficient examinations. Additionally, a reference image can be displayed via the Guide View function.



### PROTOCOL ASSISTANT guides you through your examination

Now you can establish standardised scanning protocols for various types of examinations – thus ensuring that all operators are on the same page. Our Protocol Assistant guides you through a series of defined steps, detecting any omissions or potential mistakes. You can even automatically derive the same imaging parameters simply by clicking on a reference image. So why wait? Start increasing efficiency and accuracy today.



### Consistent PATIENT MANAGEMENT with automatic measurement reports

Because reporting is such an important and complex aspect of an ultrasound examination, we made sure that all our solutions do it automatically – by transferring all measurement results into a standardized report. With just one click you can easily track and manage your patient's history; share the report in multiple formats on various devices; or import it into third-party reporting platforms.



### Improve posture (and productivity) with the COMFORTABLE SOLUTION

Many sonographers suffer from work-related musculoskeletal disorders due to the unnatural posture required for a long day of scanning. Our platforms are designed with the latest ergonomic standards in mind: with large monitors, 360° flexible arms, and adjustable operator panels. You can customise your work environment according to your needs and examination type – thus ensuring a healthy posture with less fatigue and injuries.



# YOUR SYSTEM **EXCEEDING EXPECTATIONS**

USB Ports



10.1 inch Touch Panel



4 Probe Ports



22 inch OLED Monitor or  
21.5 inch LCD Monitor

Storage Tray

Cable Management



(W)530x(D)742\*2x(H)1170-1660mm  
Weight:85kg  
Power Capacity:750VA  
Battery\*1

\*1 Option

\*2 When monitor arm is folded



EXCEPTIONAL  
IMAGE QUALITY  
AND OPERABILITY

**AI/Deep Learning** assistance function



DICOM support function

**FUJIFILM**  
Value from Innovation

**Manufactured and distributed by**  
FUJIFILM Healthcare Corporation  
2-1 Shintoyofuta, Kashiwa-shi, Chiba, 277-0804, Japan  
[www.fujifilm.com/fhc/en](http://www.fujifilm.com/fhc/en)

**Distributor for Europe**  
FUJIFILM Healthcare Europe Holding AG  
Sumpfstrasse 13, 6312 Steinhausen, Switzerland

© 2022 FUJIFILM Healthcare Europe Holding AG

- This brochure may contain descriptions of optional functions and products.
- Specifications and appearance may be subject to change for improvement without notice.
- For proper use of the system, be sure to read the operating manual prior to placing it into service.



ARIETTA, DeepInsight, eFocusing, Carving Imaging are registered trademarks or trademarks of FUJIFILM Healthcare Corporation in Japan and other countries. ARIETTA™ DeepInsight™ is one of the ARIETTA™ series.